

Omnidirectional Antenna
146 to 174 MHz

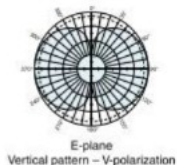
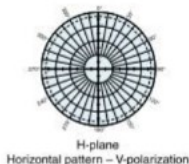
The Kathrein Scala Division K55262n-Series of omnidirectional broadband antennas is intended for use in professional fixed-station applications in the 146–174 MHz band. They feature:

- Unity gain.
- Variable mounting configurations.
- Alodined aluminum construction.
- Inner conductor and all metal parts at DC ground potential.
- Cast aluminum base.
- Stainless steel hardware and fastenings.

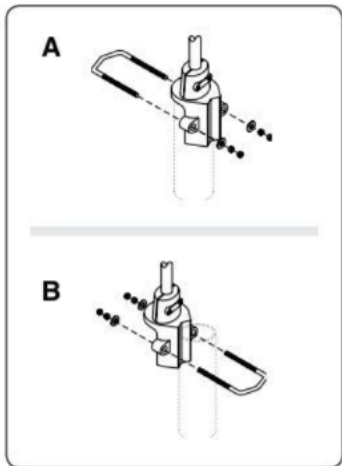
Specifications:

Frequency range	K552626	146–156 MHz
	K552627	155–165 MHz
	K552628	164–174 MHz
Gain	2 dBi	
Impedance	50 ohms	
VSWR	<1.4:1	
Polarization	Vertical	
Maximum input power	130 watts (at 50°C)	
H-plane beamwidth	Omni	
E-plane beamwidth	78 degrees (half-power)	
Connector	Connects to RG-213/U cable via terminals inside antenna. Customer supplied jumper required.	
Weight	2.9 lb (1.3 kg)	
Height	K552626	42.7 inches (1085 mm)
	K552627	41 inches (1042 mm)
	K552628	39.1 inches (993 mm)
Diameter	1.4 inches (35 mm)	
Wind load	at 93 mph (150kph)	
	6 lbf / 25 N	
Wind survival rating*	120 mph (200 kph)	
Shipping dimensions	49.4 x 4.4 x 3.8 inches	
	(1254 x 112 x 97 mm)	
Shipping weight	6 lb (2.8 kg)	
Mounting	Mounting hardware supplied.	

A. Mounting for 1.6 to 2.2 inch (40 to 54 mm) OD mast.

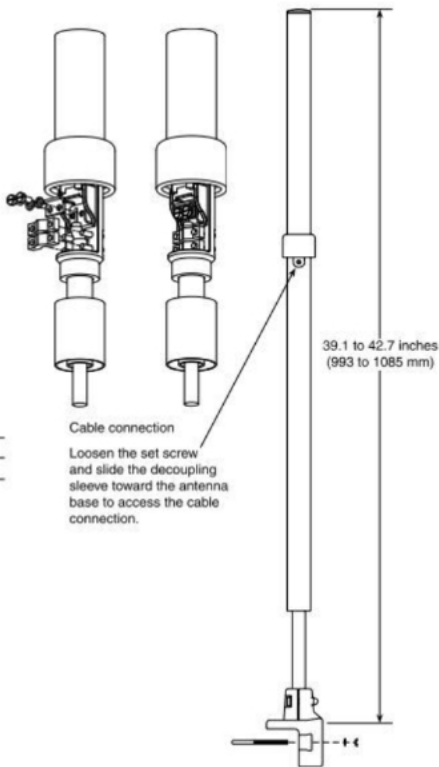


Omnidirectional Antenna
146 to 174 MHz



Mounting Options:

	Description
A	Mounting for 1.6 to 2.2 inch (40 to 54 mm) OD mast
B	Mounting for 0.8 to 2.2 inch (20 to 54 mm) OD mast



Order Information:

Model	Description
K552626	146–156 MHz Omni antenna
K552627	155–165 MHz Omni antenna
K552628	164–174 MHz Omni antenna